



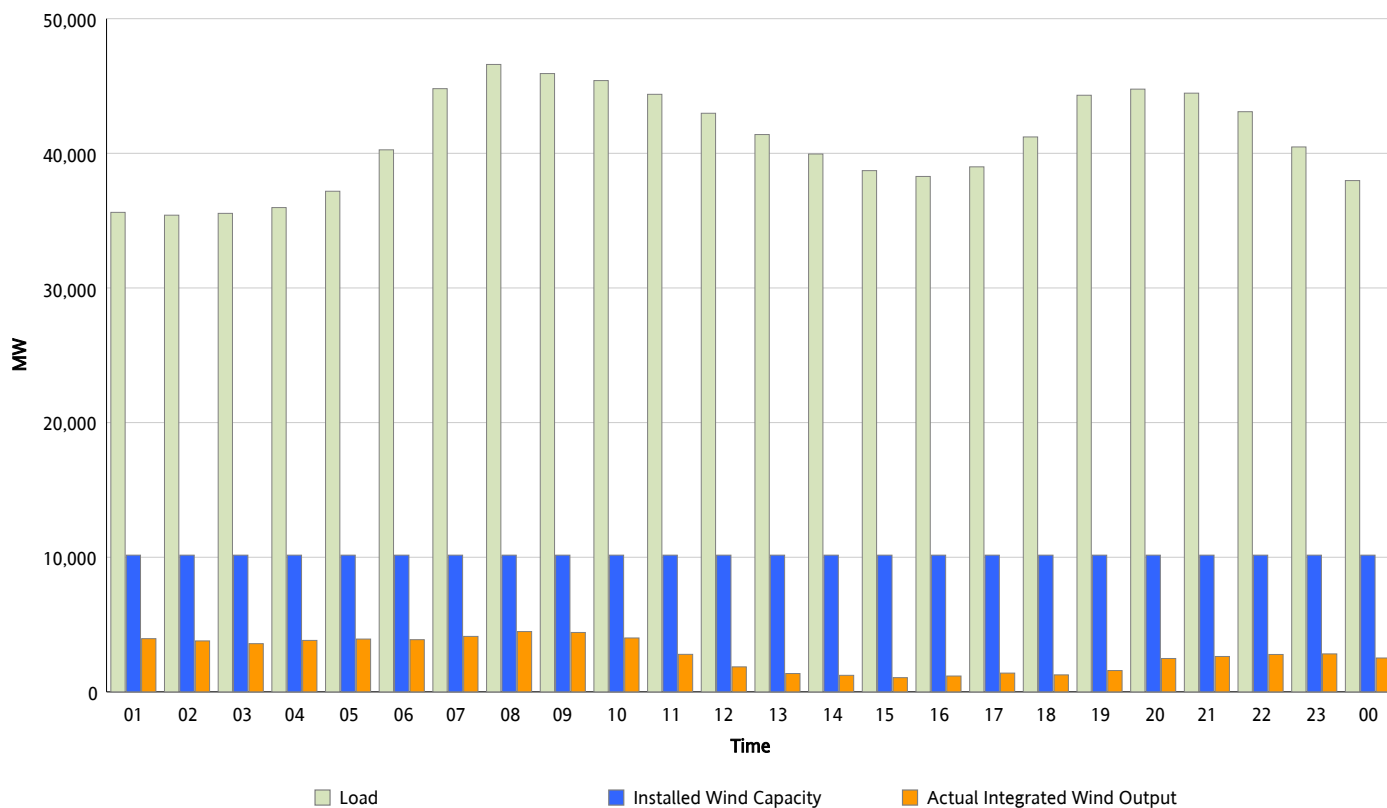
## ERCOT Grid Operations

### Wind Integration Report : 01/14/2013

Peak Load	46,601 MW
Load Peak Hour (HE)	08
Wind Over Peak	4,482 MW
Wind Record 12/25/12	8,638 MW
Max Wind Value*	4,625 MW
Wind Peak Time	07:55
Wind Integration %	10.03 %

#### Hourly Average Actual Load vs. Actual Wind Output

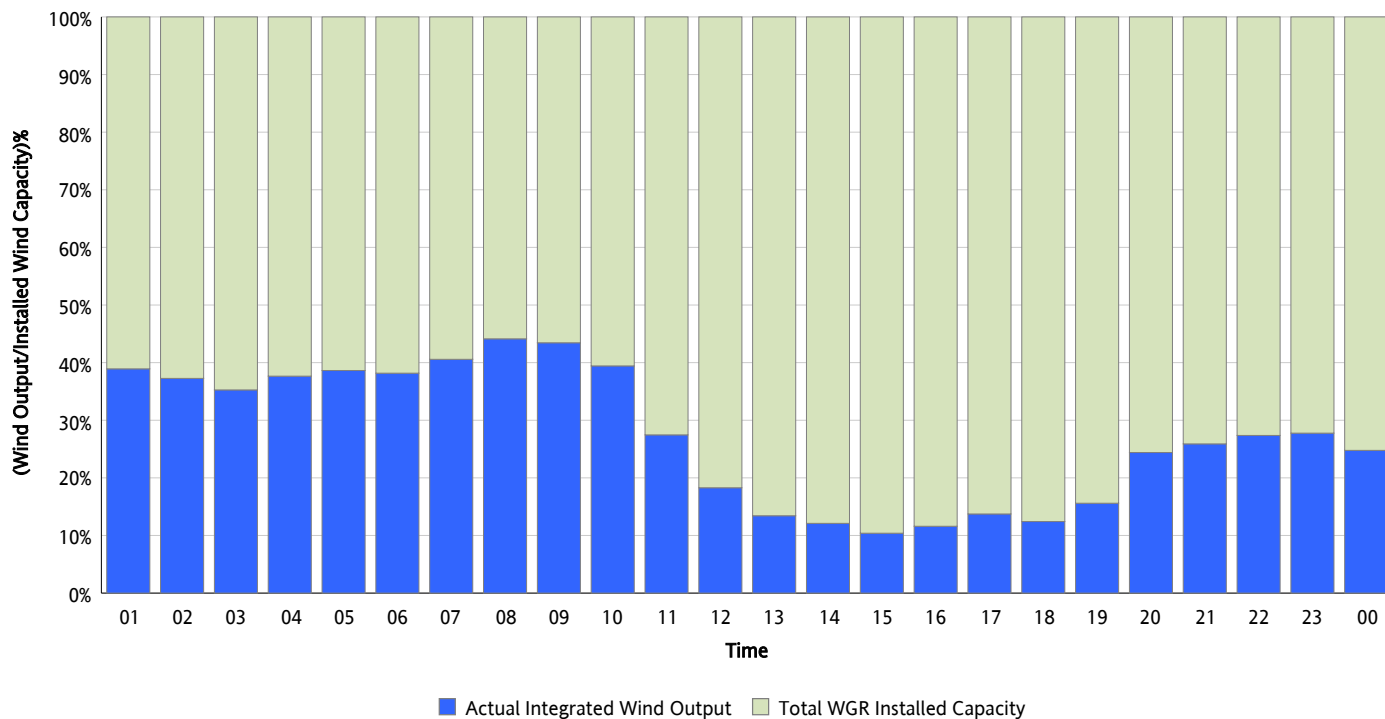
01/14/2013



\* Wind Record and Wind Max represent instantaneous values and the rest of the values are integrated over the hour

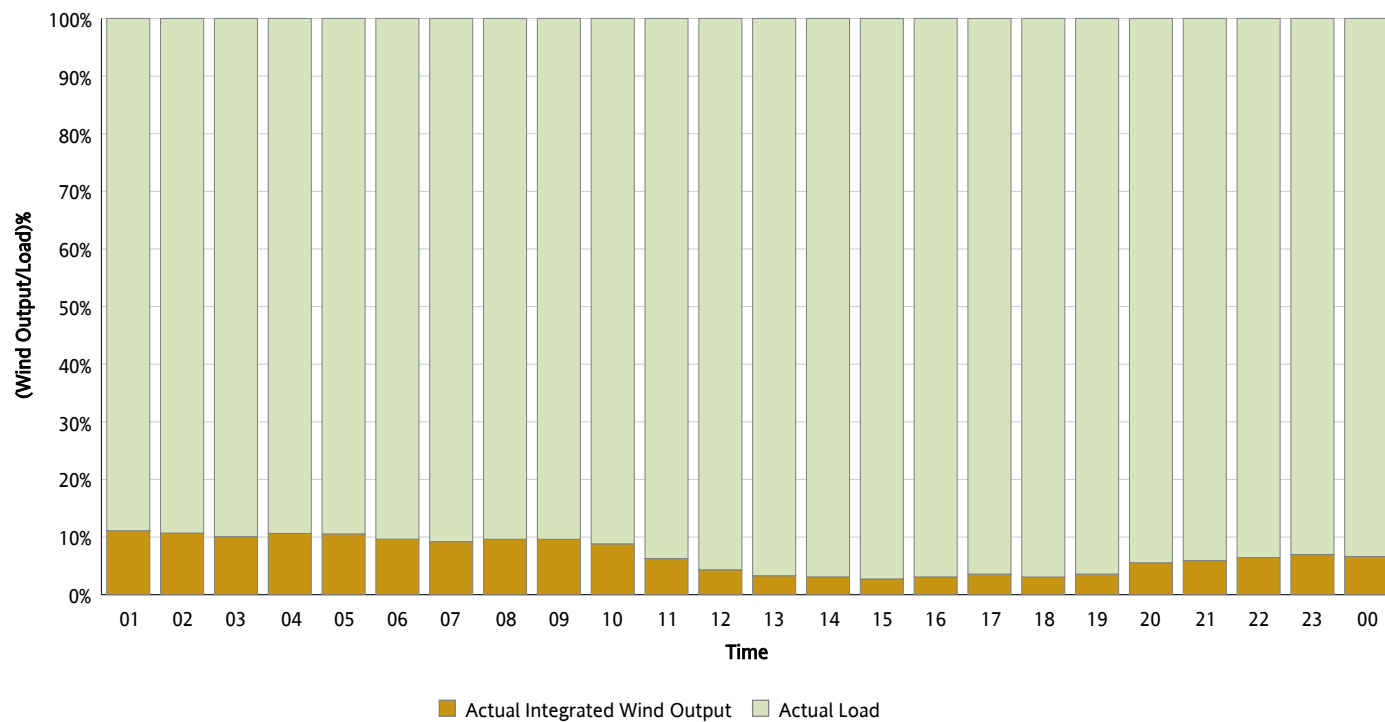
## Actual Wind Output as a Percentage of the Total Installed Wind Capacity

01/14/2013



## Actual Wind Output as a Percentage of the ERCOT Load

01/14/2013



## ERCOT Load vs. Actual Wind Output

01/07/2013 - 01/14/2013

